

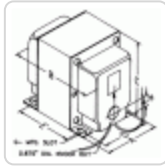


Quality Products. Service Excellence.

D.C. Filter Chokes 193 Series

Enclosed & Potted Chassis Mount

Features



- Enclosed, 4-hole mount chokes (some models also available epoxy potted in a black powder paint - drawn steel housing (see chart). Potted models mount with 1/4" - 20 hardware (included).
- Tolerance of 15% on both inductance & resistance.
- Inductances measured at rated D.C. current.
- Minimum 8" long leads.
- Units will exhibit less inductance at slightly higher currents or more at lower currents.
- Perfect for high voltage power supply filtering, case matches power transformers & tube audio output transformers.
- Units are vacuum impregnated with polyurethane varnish for quiet and long life operation
- For more sizes and voltages (open - bracket mount type) - link here to our **153-159 Series**.

| Part No. | Style | Inductance (Henrys) | D.C. Current (ma.) | Resistance (Ohms) | Maximum Operating (Volts D.C.) | Weight (lbs.) | Dimension Ref. |
|----------|----------|------------------------|-----------------------|----------------------|--------------------------------------|------------------|-------------------|
| 193T | Enclosed | 0.05H | 2000 | 0.7 | 300 | 2.5 | X6 |
| 193V | Enclosed | 0.15H | 3000 | 1 | 300 | 9 | X14 |
| 193U | Enclosed | 0.2H | 2000 | 1.7 | 300 | 6 | X12 |
| 193R | Enclosed | 0.3H | 1000 | 3.5 | 1000 | 4.5 | X10 |
| 193S | Enclosed | 1.0H | 1000 | 5.75 | 1000 | 8 | X13 |
| 193K | Enclosed | 2.6H | 300 | 21 | 800 | 3.25 | X8 |
| 193N | Enclosed | 3H | 500 | 35 | 600 | 5 | X11 |
| 193NP | Potted | 3H | 500 | 36 | 800 | 7 | P1 |
| 193H | Enclosed | 5H | 200 | 65 | 600 | 2.5 | X6 |
| 193L | Enclosed | 5H | 300 | 57 | 800 | 5.5 | X11 |
| 193LP | Potted | 5H | 300 | 55 | 800 | 7.5 | P1 |
| 193P | Enclosed | 5H | 500 | 26 | 800 | 10.75 | X14 |
| 193D | Enclosed | 8H | 150 | 75 | 600 | 3.25 | X8 |
| 193G | Enclosed | 10H | 150 | 102 | 800 | 4.25 | X17 |
| 193GP | Potted | 10H | 150 | 103 | 800 | 6 | P1 |
| 193J | Enclosed | 10H | 200 | 82 | 800 | 5.5 | X11 |
| 193JP | Potted | 10H | 200 | 79 | 800 | 7.5 | P1 |
| 193M | Enclosed | 10H | 300 | 63 | 800 | 10.5 | X14 |
| 193MP | Potted | 10H | 300 | 63 | 800 | 10.5 | P1 |
| 193Q | Enclosed | 10H | 500 | 53 | 1000 | 21 | X16 |
| 193B | Enclosed | 12H | 100 | 155 | 600 | 2.5 | X6 |
| 193C | Enclosed | 20H | 100 | 181 | 600 | 3.25 | X8 |
| 193CP | Potted | 20H | 100 | 184 | 800 | 5 | P1 |

| Part No. | Style | Inductance (Henrys) | D.C. Current (ma.) | Resistance (Ohms) | Maximum Operating (Volts D.C.) | Weight (lbs.) | Dimension Ref. |
|----------|----------|------------------------|-----------------------|----------------------|--------------------------------------|------------------|-------------------|
| 193A | Enclosed | 200H | 40 | 2000 | 600 | 3 | X7 |

Mechanical Data

| Mtg. Style | Dimensions | | | | | G-Mtg. Slot |
|------------|------------|------|------|------|------|-------------|
| | A | B | C | D | E | |
| P1 | 3.31 | 3.88 | 4.25 | - | - | - |
| X6 | 2.50 | 2.75 | 3.06 | 2.00 | 1.69 | .203 x .38 |
| X7 | 2.50 | 2.94 | 3.06 | 2.00 | 1.94 | .203 x .38 |
| X8 | 2.50 | 3.25 | 3.06 | 2.00 | 2.19 | .203 x .38 |
| X10 | 3.13 | 3.50 | 3.81 | 2.50 | 2.19 | .203 x .38 |
| X11 | 3.13 | 3.75 | 3.81 | 2.50 | 2.44 | .203 x .38 |
| X12 | 3.13 | 4.25 | 3.81 | 2.50 | 2.94 | .203 x .38 |
| X13 | 3.75 | 4.00 | 4.56 | 3.00 | 2.81 | .203 x .38 |
| X14 | 3.75 | 4.50 | 4.56 | 3.00 | 3.31 | .203 x .38 |
| X16 | 3.75 | 5.50 | 4.56 | 3.00 | 4.31 | .203 x .38 |
| X17 | 3.13 | 3.25 | 3.81 | 2.50 | 1.94 | .203 x .38 |

Data subject to change without notice

© 2018. Hammond Manufacturing Ltd. All rights reserved.