

1760C

TUBE GUITAR AMPLIFIER - OUTPUT TRANSFORMER

- Designed for drop in replacement of original units.
- Constructed to look similar to original factory units (where possible).
- Material used & design specifications were kept as close as possible to the original part to preserve the stock "tone".
- Open style with minimum 9" long primary and secondary leads
- Frequency response 70Hz - 15KHz (0/-1dB reference @ 1KHz)
- Distortion is less than 1% @ 70Hz

ELECTRICAL SPECIFICATIONS

Characteristics		Typical	
Input Impedance		5000/8000 Ohms	
Output Impedance		3.2, 8 & 16 Ohms	
Output Power		5W	
Maximum PRI DC		40mA	
DCR			
Primary Blue-Red		359.90 Ohms	
Primary Brown-Red		272.08 Ohms	
Secondary Black-Yellow		0.278 Ohm	
Secondary Black-Green		0.624 Ohm	
Secondary Black-White		1.491 Ohm	
Inductance	Impedance	@ 1.0 kHz, 1.0 V OC	
Primary Blue-Red	23.0H	132KOhm	
Primary Brown-Red	16.2H	92KOhm	
Secondary Black-Yellow	76.70mH	153.85 Ohm	
Secondary Black-Green	170.65mH	373.8 Ohm	
Secondary Black-White	305.10mH	729.0 Ohm	
Leakage Inductance		@ 1.0 kHz, 1.0 V SC	
Blue-Red		719.5mH	
Brown-Red		583.0mH	
Dielectric Strength		1750VRMS	
Temperature Range		-40 to 105 degC	

TEST CONDITIONS

Measurement instruments:

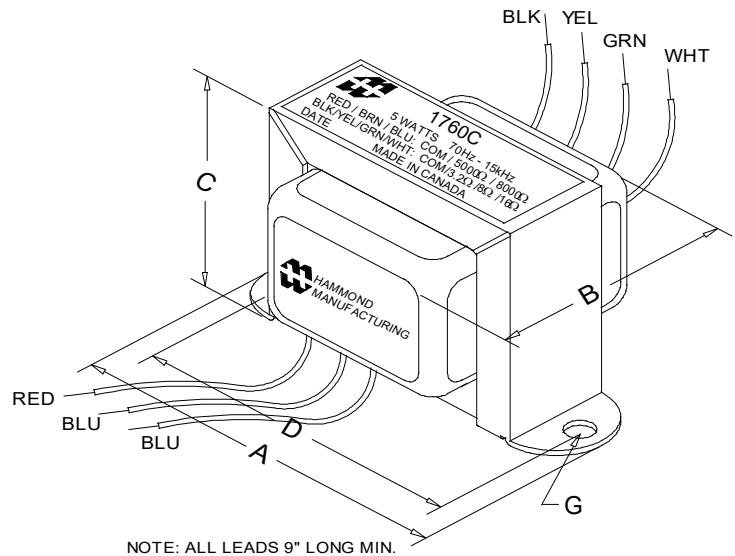
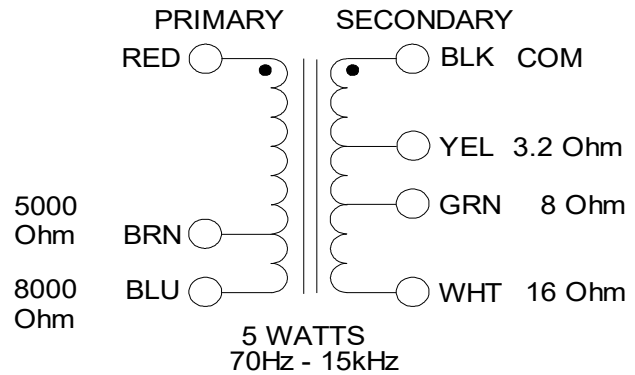
D scope series iii audio analyzer
Wayne Kerr 3255B with a 3265B

Keithley 2010 DVM

Hp4192a impedance analyzer

* All graphs input level 27dBu @1.0KHz reference.

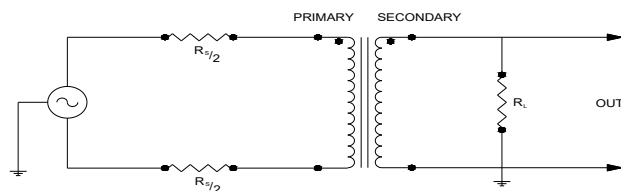
**The results are typical and are subject to normal manufacturing and electrical tolerances.



Dimensions

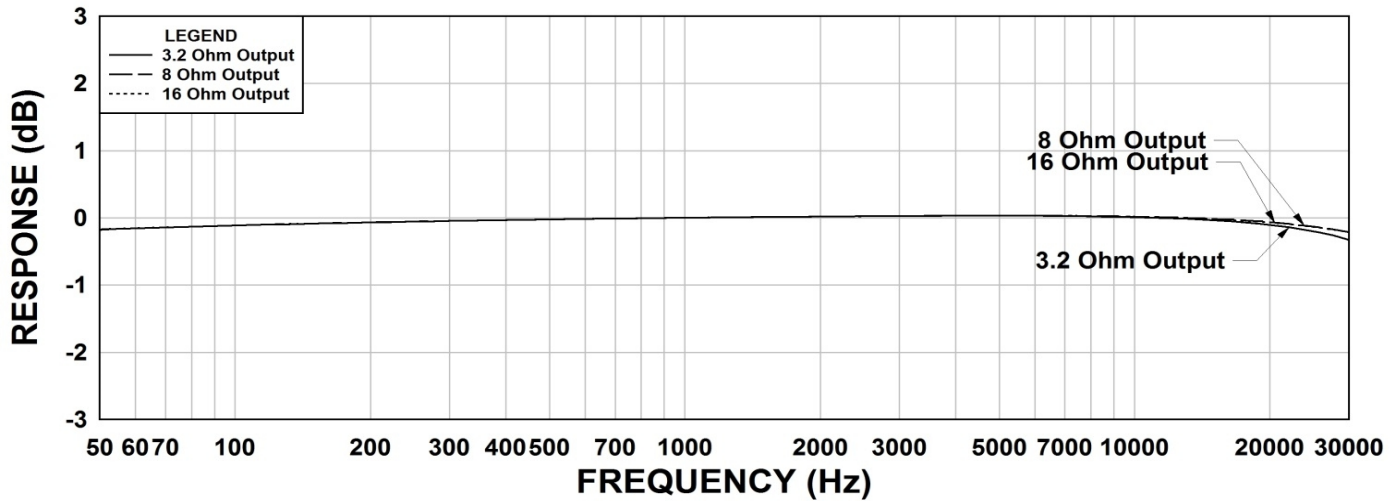
A	2.813" ±0.063	D	2.375" ±0.063
B	1.560" ±0.125	G	0.187" ±0.015
C	1.683" ±0.063		

TYPICAL TEST CIRCUIT

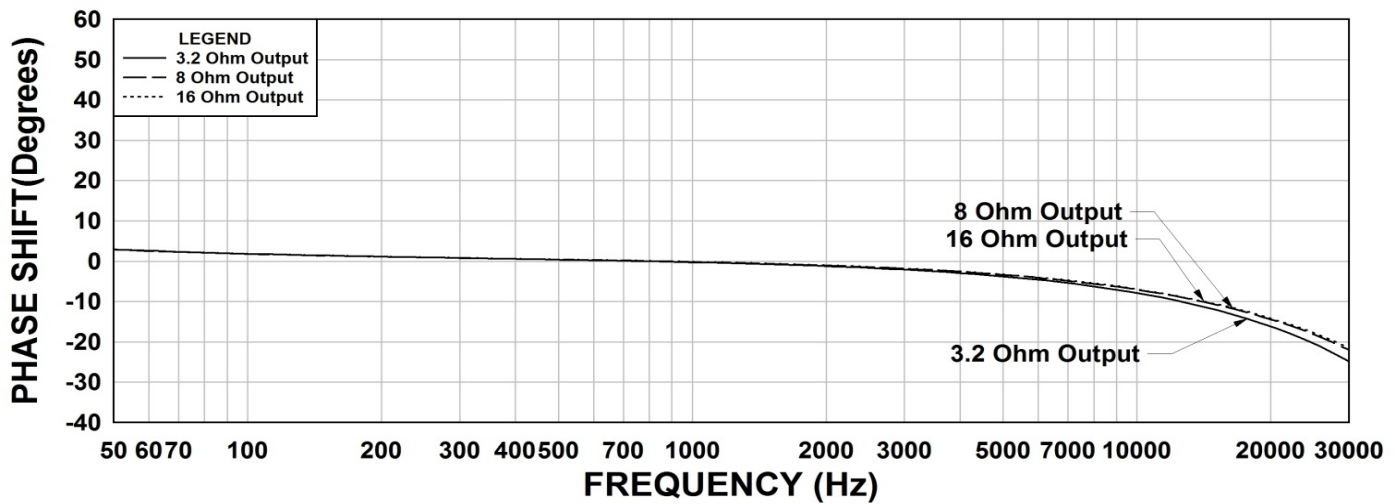


Release 2: 02.12.2021

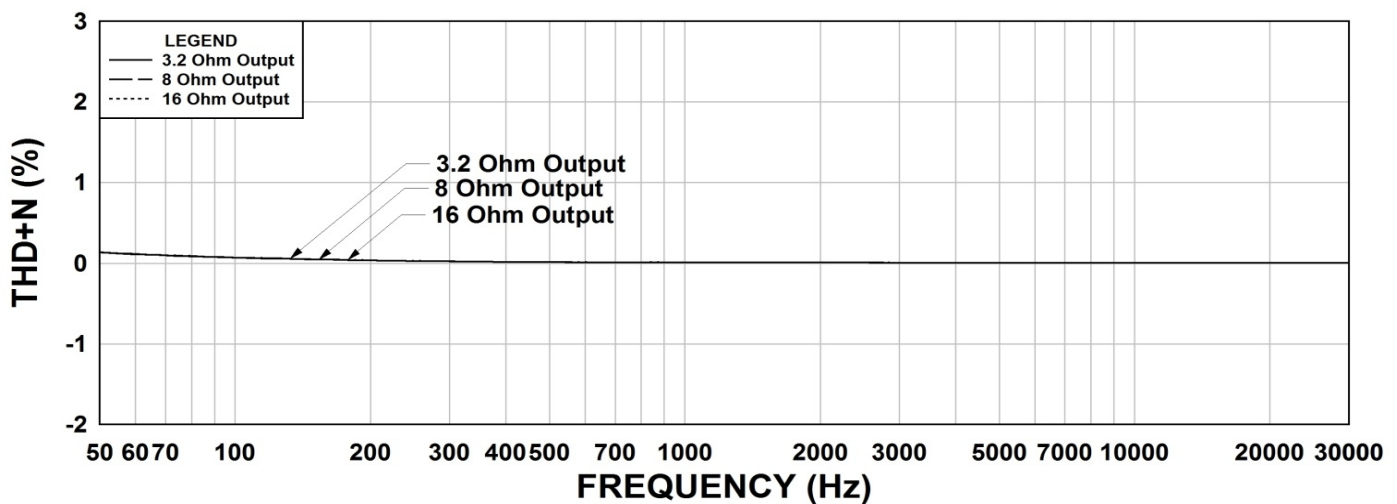
1760C Frequency Response RS = 5K Ohm



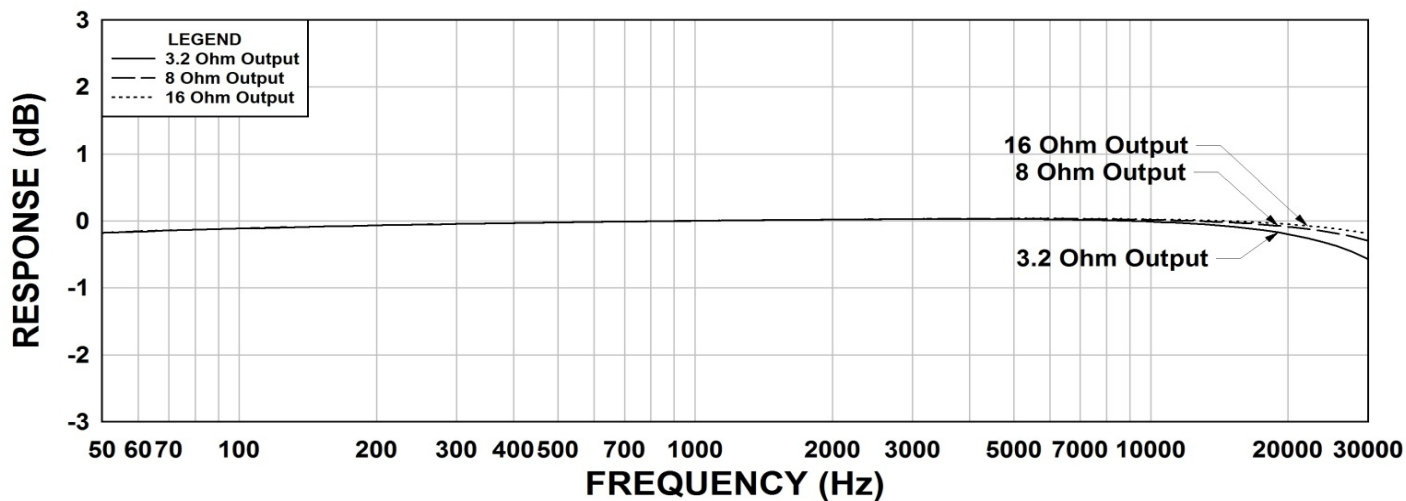
1760C Phase Shift RS = 5K Ohms



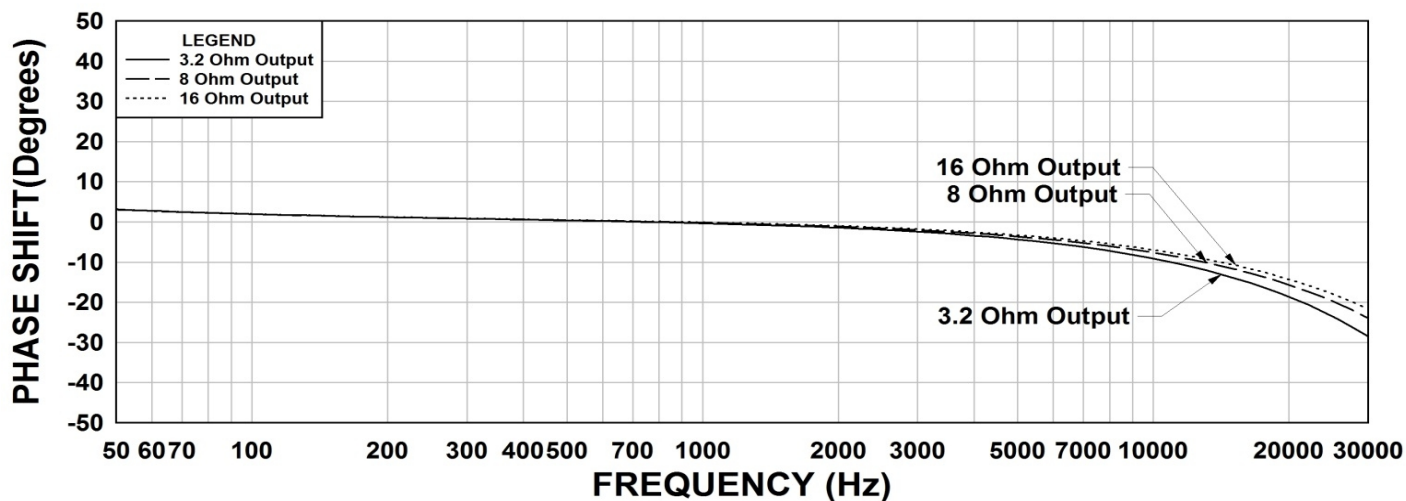
1760C THD+N RS = 5K Ohms



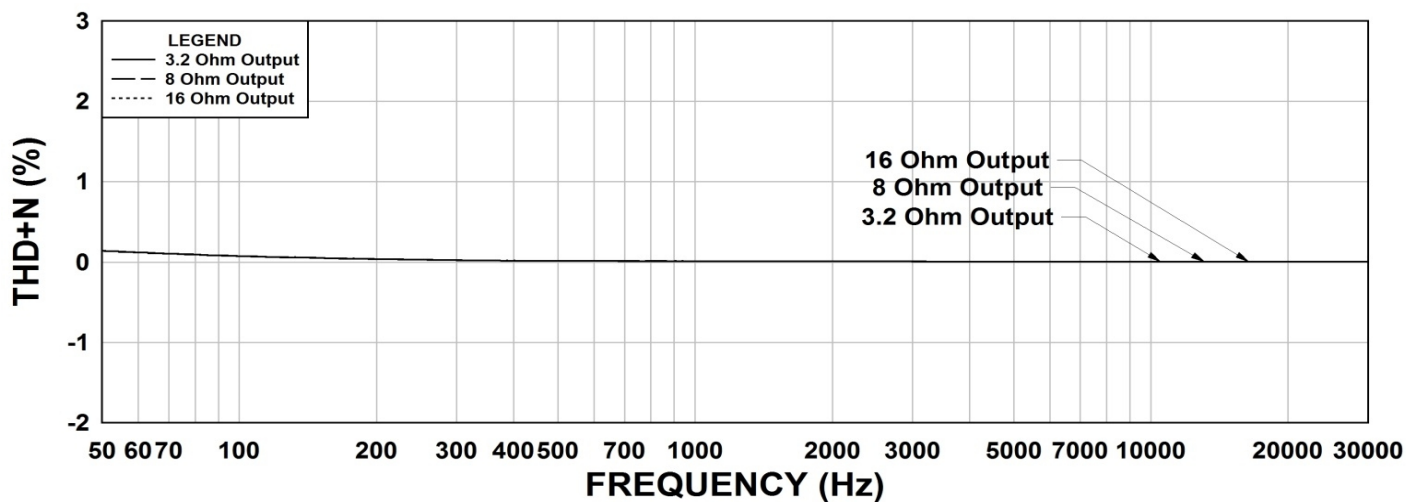
1760C Frequency Response RS = 8K Ohm



1760C Phase Shift RS = 8K Ohm



1760C THD+N RS = 8K Ohm



This drawing and the information in it is the property of Hammond Manufacturing. It may not be reproduced, transmitted or used in any manner whatsoever without the written permission of Hammond Manufacturing. Data subject to change without notice.